

# “A Self-Assessment to Address Climate Change Readiness in Your Community”

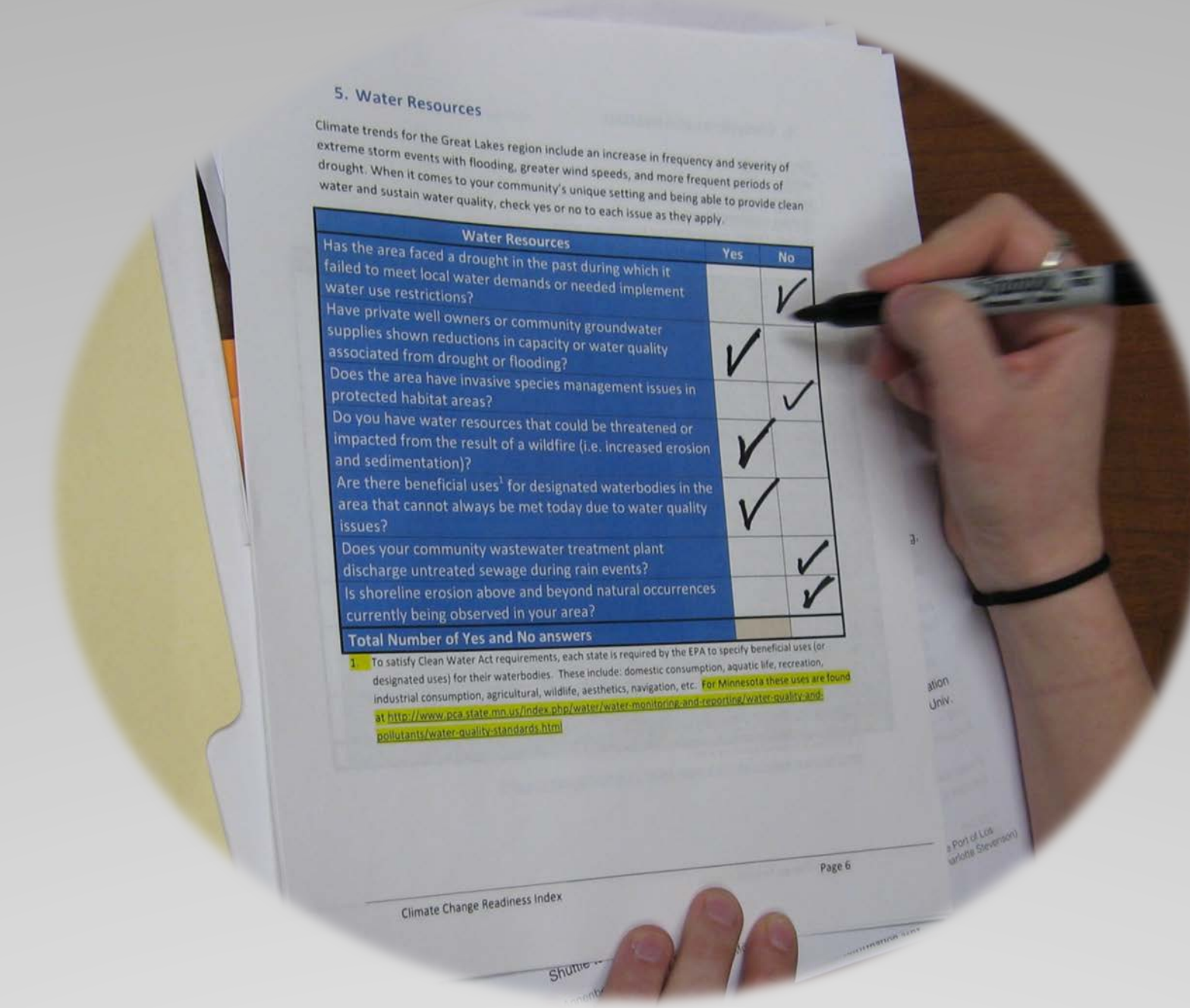


Jesse Schomberg and Hilarie Sorensen  
MN Sea Grant College Program



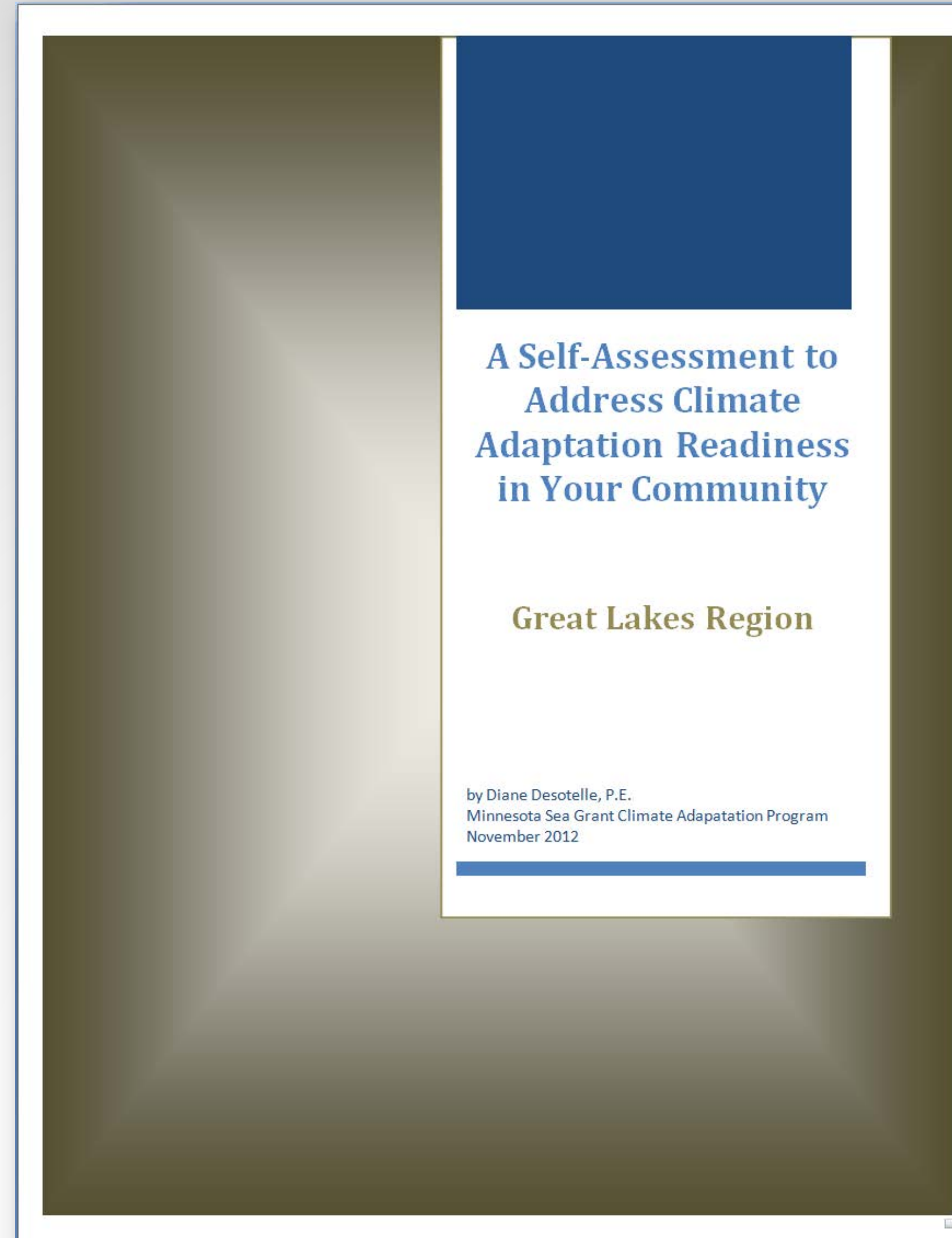
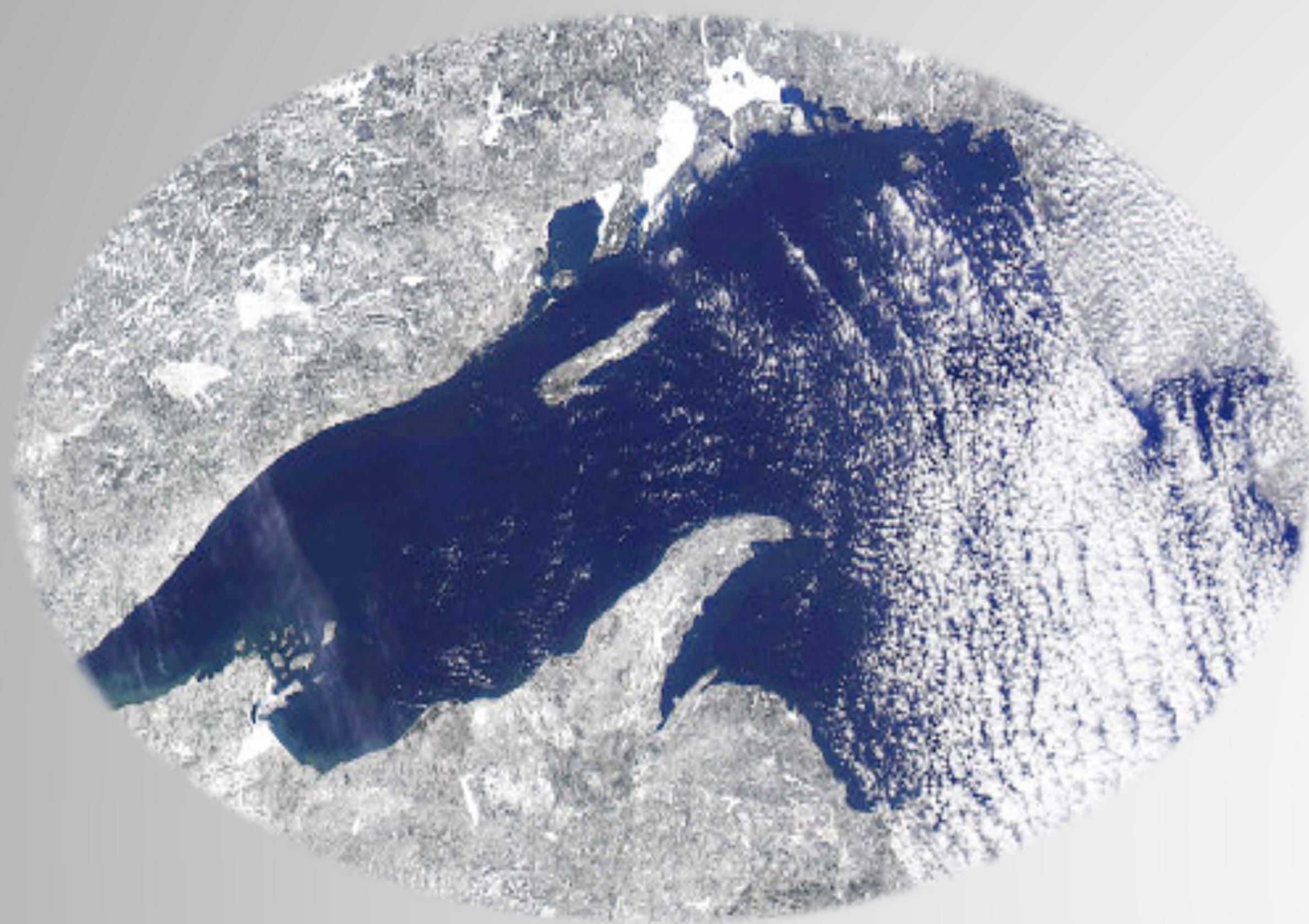
**Purpose:** To provide communities with a simple method to review potential vulnerabilities to climate trends, to bring climate change adaptation thinking into planning and preparedness on the community level, and to identify vulnerable areas specific to each community in need of further assessment.

The self-assessment was developed by Diane Desotelle at MN Sea Grant in partnership with Sea Grant Network climate educators in MI, IL/IN, and WI. It is based on the “Coastal Community Resilience Index: A Community Self-Assessment” developed by MS-AL Sea Grant Consortium, and piloted by the Sea Grant programs in TX, LA, FL, and MS, and AL.

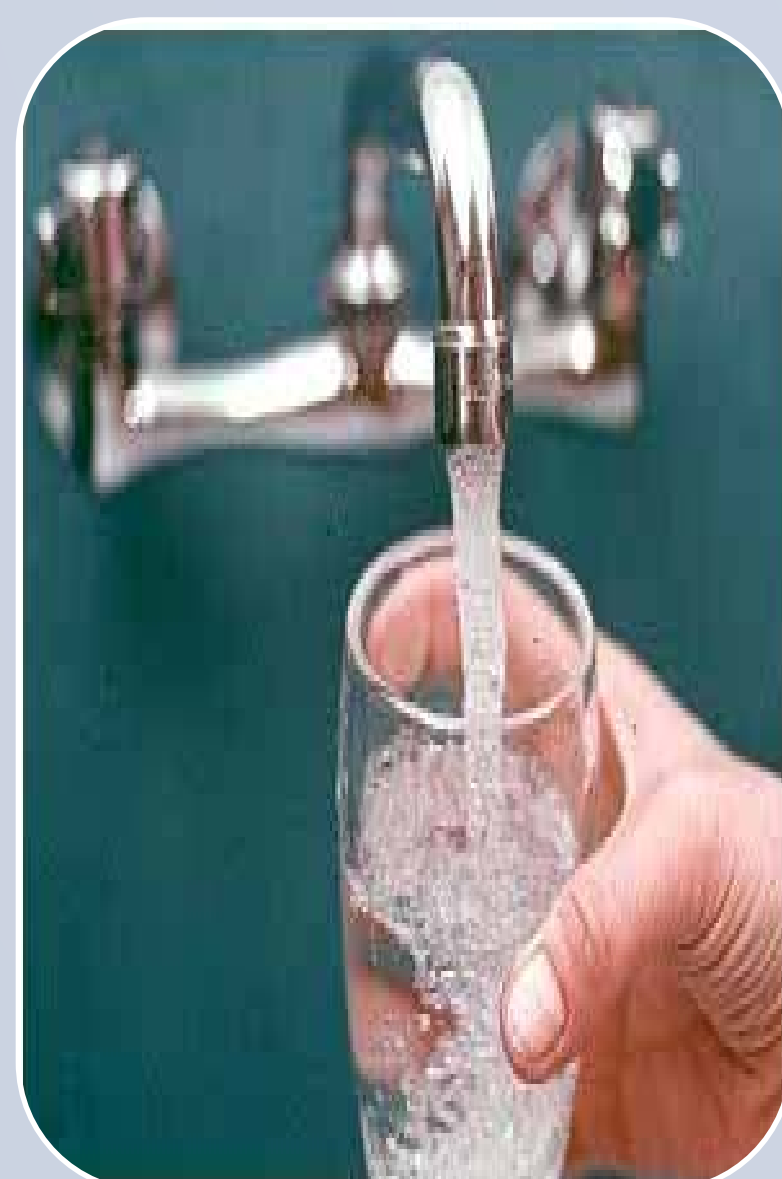


**Process:** The self-assessment tool is introduced by Sea Grant educators to local government staff (administrators, planners, engineers, public works directors, natural resource managers), etc. during a face-to-face meeting in the community. Each of the categories (see below) are described.

The self assessment is then completed by community staff individually or as a group then returned to Sea Grant for analysis. The results are used to identify early adopters and specific needs for vulnerability assessments within each community, as well as climate change adaptation education and planning. **It is a first step for communities to start looking at their vulnerabilities.** Follow-up will address identified needs.



**Results and Follow-up :** Results from the two pilot communities to-date show certain areas in need of further discussion. These areas include: infrastructure, ecosystem and habitat vulnerability. Follow-up with communities may include organizing a climate change adaptation educational series or workshop as well as conducting one or more vulnerability assessments for identified target areas.



## Critical Infrastructure Flooding Readiness

- Sewage Treatment Plant
- Power Grid
- Drinking Water
- Evacuation Routes

## Critical Facilities Flooding Readiness

- Police Stations
- Fire Stations
- Emergency operations Center
- Hospitals

## Built Environment & Infrastructure

- Shoreline Infrastructure
- Road Washouts
- Ports & Marinas
- Storm Sewers & Culverts

## Operations & Maintenance

- Snow Removal
- Storm Sewer Repair
- Sanitary Sewer Overflows
- Beach Closures

## Water Resources

- Water Supply
- Ground Water
- TMDL Issues
- Shoreline Erosion

## Ecosystems & Habitats

- Water Quality
- Estuaries & Wetlands
- Invasive Species
- Migration Corridors

## Tourism & Recreation

- Winter Impacts
- Summer Impacts
- Park and Recreation Facilities

## Business Plans & Equipment

- Generators
- Backup Systems
- Staffing
- Re-Stocking

## Community Plans

- Hazard Mitigation/ Emergency Plans
- Stormwater, Land Use, Transportation Plans
- Forestry, Recreation Plans